

ELUFT WEBSERVER

WEBSERVER CONTROL FOR ELUFT USING IP-ADDRESS AND MOBILE APPLICATION

Our **newest feature** in our vast list of options is the **Webserver**.

It enables our customers to view data from the logic controller inside the air machine on a LAN-connected appliance such as a smart phone, tablet or PC, displayed in a graphical, professional man-machine interface (MMI).

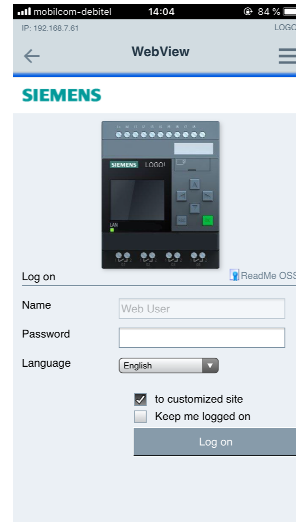
Requirements

- eluft air machine with a LAN-capable logic controller inside. These are meanwhile standard in elnic air machines from sizes eluft 150-1400 and all eco machines.
- LAN connection, either via LAN cable or via Wi-fi with our Wireless Access Point (WAP). Our WAP can be ordered extra for all eluft air machines (150-1400 and eco).
- our latest webserver software including password.
- a device of your choice, which is connected via Wi-fi or LAN.

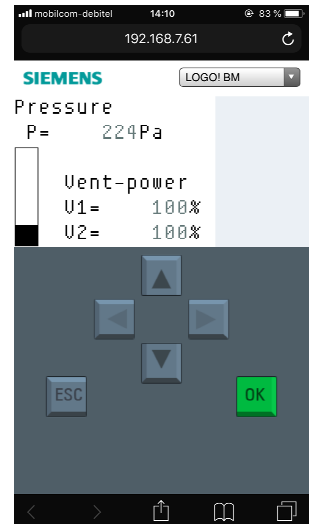
Features

- shows real-time data from the (connected) eluft unit(s)
- offers access to the diagnose pages
- shows if errors occur in the system (in red)
- offers access to the standard Logo interface using a separate password for changing settings on the machine

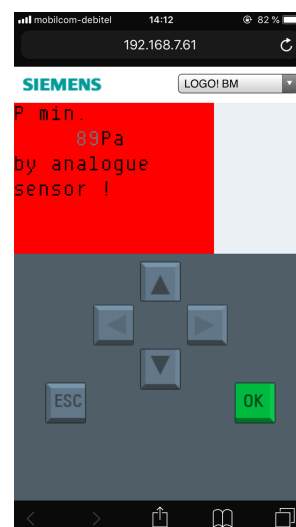
Examples of a PLC and data screens on a smartphone →



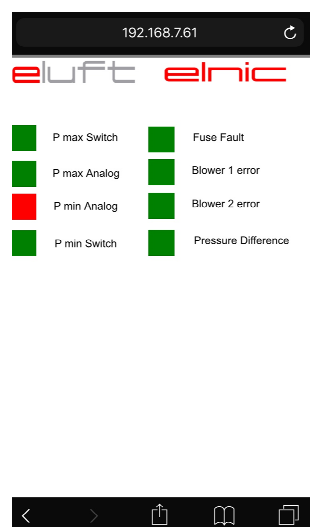
Login screen smartphone



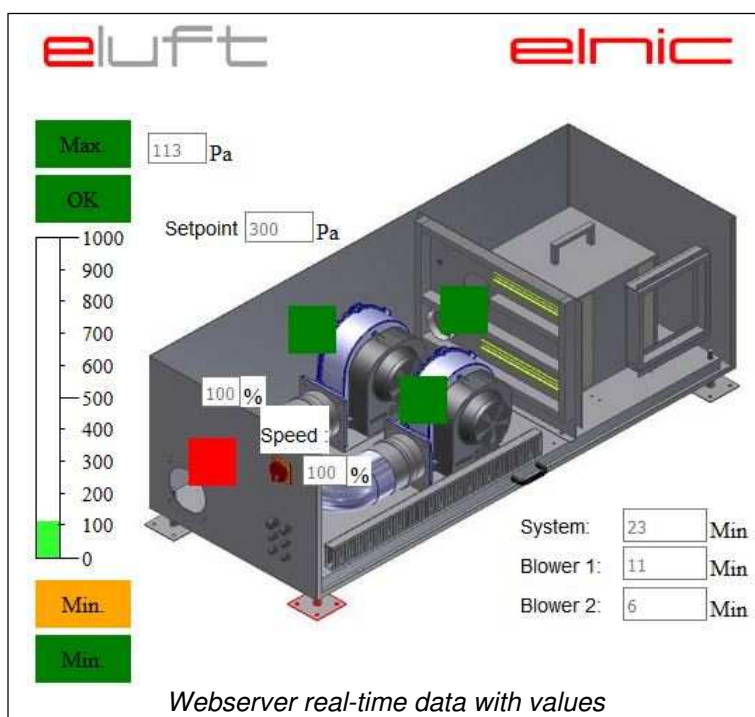
PLC real-time data



PLC error screen



Webserver error screen



Webserver real-time data with values

When switching through the pages, further values and details are shown. These screens are available in all variable sizes (mobile, tablet, laptop, PC screen).

The Webserver also has a customized site. This user interface makes it easier and faster to check the status. Compare screenshots 3 and 4, both showing an analog sensor error. The eluft site even shows an overview of the whole eluft machine.

← Example of the eluft data screen on tablet/laptop/PC

This webserver screenshot with real-time data shows the analog sensor has an error signal (red square). All other squares are green, meaning these parts are OK.